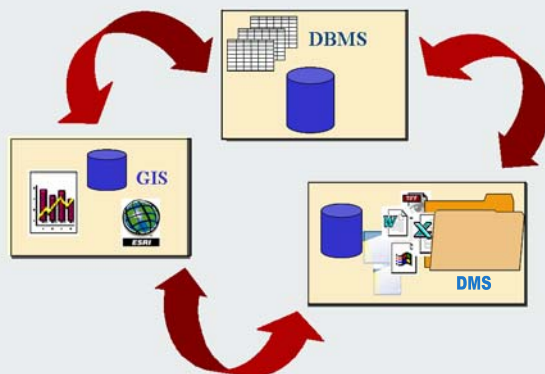


## PlaceLynx™ for ArcGIS

Make ArcGIS a gateway to enterprise information with PlaceLynx for ArcGIS and LaserFiche.

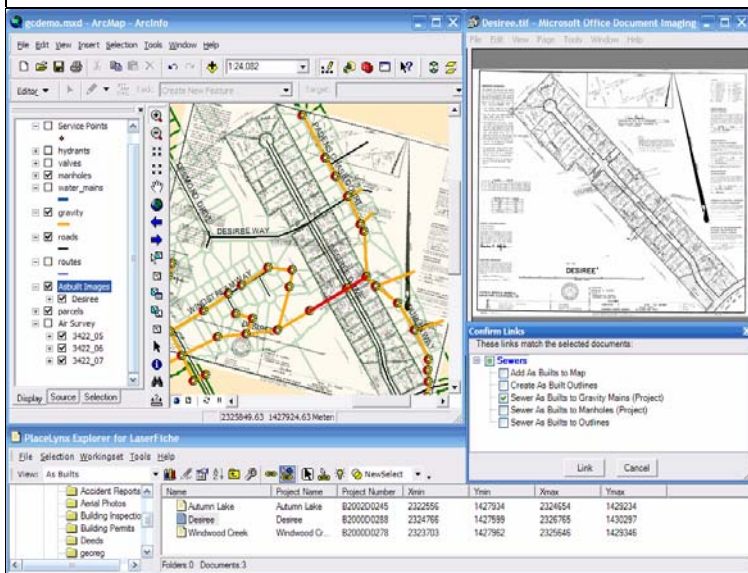
Setting the standard in over 21,000 organizations worldwide, **LaserFiche** document imaging and management solutions solve the problems that impact government and business today.

**PlaceLynx™ for ArcGIS** connects the LaserFiche content repository to ArcGIS creating what we call *spatially enabled documents*. PlaceLynx also interconnects tabular databases, providing users integrated access to the information they need, wherever it resides.



PlaceLynx™ enhances the reach and effectiveness of your GIS. A large percentage of the documents and files managed by, utilities, energy companies, and government agencies describe something represented on a map. Because workers in these enterprises understand, use, and like maps, a map driven user interface is often the most natural integration point for information of all sorts.

### MORE POWERFUL QUERIES



PlaceLynx™ brings the full power of GIS spatial processing to bear on the problem of document retrieval. Instead of browsing through folders for documents, or composing a query, a user can say, “I want these sorts of documents relevant to that thing there on the map.” He clicks in ArcMap or ArcIMS and the documents appear. Or he can say, “Find the geo-registered files in my current map area and display them on the GIS canvas. Conversely, he can find documents in LaserFiche, and then find related map features, address locations, or route measurements on the map.

### COMPREHENSIVE AND FLEXIBLE

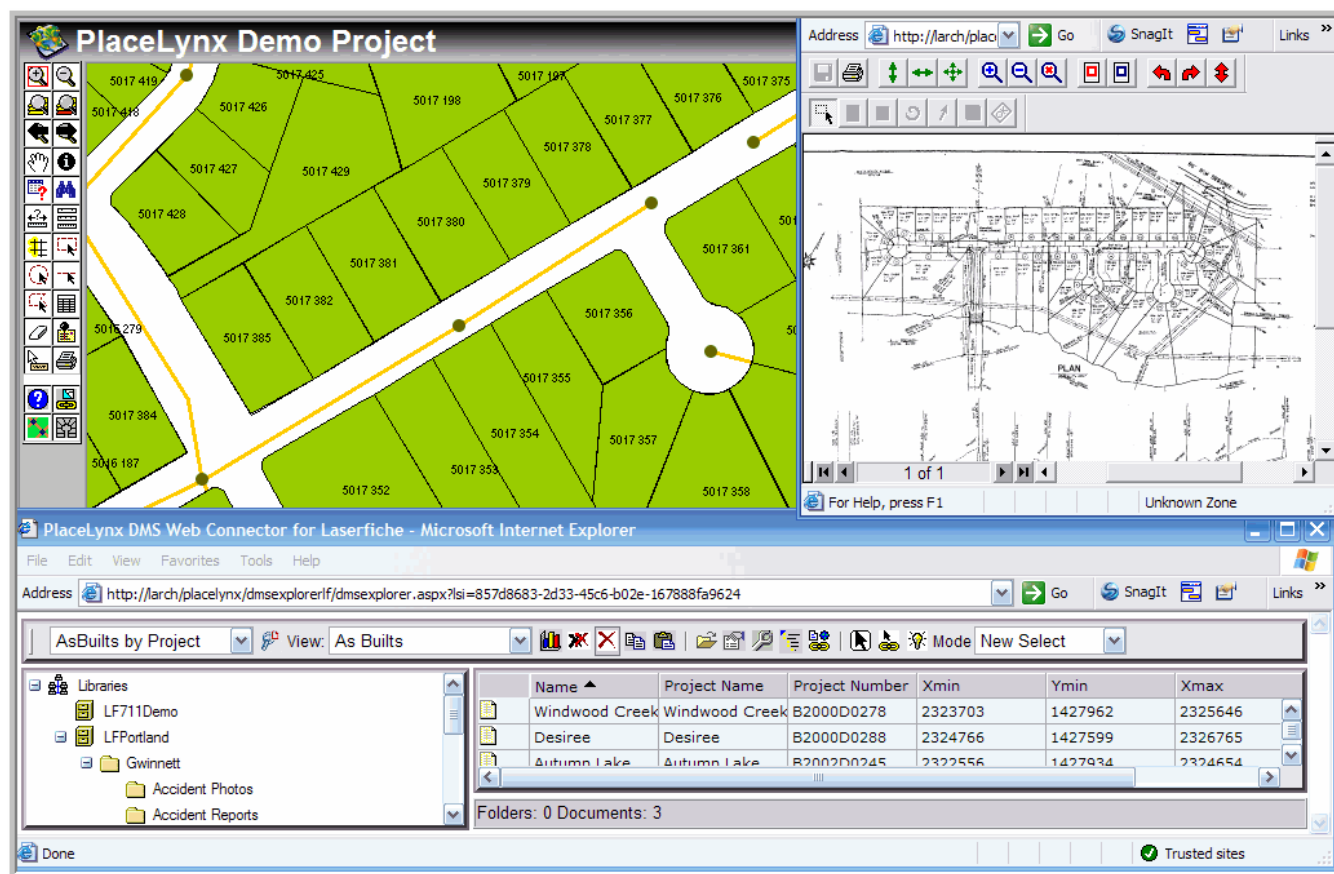
- PlaceLynx™ includes Web and desktop connectors for both ESRI and LaserFiche.
- All connectors are interoperable. For example, the web connector for LaserFiche can be used with either ArcMap or ArcIMS. Both web and desktop connectors will also work with the coming ArcGIS Server connector scheduled for release in 2007.

## KEY FEATURES

- PlaceLynx™ is based on a flexible strategy for linking the schemas of the GIS and content repository. Documents and map features may be associated through a variety of different methods. Links can be based on key-foreign key relationships, addresses, route measurements, and coordinates stored with documents. Links can also search full-text indexed documents.
- Map features can be created from documents; property values can be moved from one system to another.
- Stores and retrieves geo-registered and related files (world files, etc.) in LaserFiche.
- Link definitions are tolerant of differences in data formats between systems. For example, a field that contains dashes or a prefix in the GIS, but not in LaserFiche can be accommodated.
- Bi-directional interface for both web and desktop.
- Incorporates integration with OLEDB databases. Databases such as those included in case management or work management systems can be interconnected with the GIS and/or LaserFiche.

## CONFIGURABLE and CUSTOMIZABLE

- Customers can define new links to accommodate new types of data.
- Customers can tailor the user interface for different groups of users through *project files*.
- Custom buttons* make it possible to customize the user interface without writing code.
- Integration functions are exposed through an API.
- Customers can create *query templates* to enable end users to retrieve documents with minimal training.



**PlaceLynx Demo Project**

Address: <http://larch/plac...> Go SnagIt Links

1 of 1

For Help, press F1 Unknown Zone

PlaceLynx DMS Web Connector for Laserfiche - Microsoft Internet Explorer

File Edit View Favorites Tools Help

Address: <http://larch/placelynx/dmsexplorer/lf/dmsexplorer.aspx?lsi=857d8683-2d33-45c6-b02e-167888fa9624> Go SnagIt Links

AsBuilds by Project View: As Builds Mode New Select

Name	Project Name	Project Number	Xmin	Ymin	Xmax
Windwood Creek	Windwood Creek	B2000D0278	2323703	1427962	2325646
Desiree	Desiree	B2000D0288	2324766	1427599	2326765
Autumn Lake	Autumn Lake	B2000D0245	2322556	1427934	2324654

Folders: 0 Documents: 3

Done Trusted sites