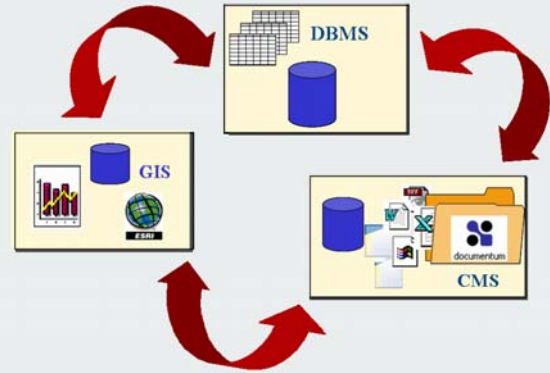


PlaceLynx™ for ArcGIS®

Make ArcGIS® a gateway to enterprise information with PlaceLynx™ for ArcGIS® and EMC/Documentum.

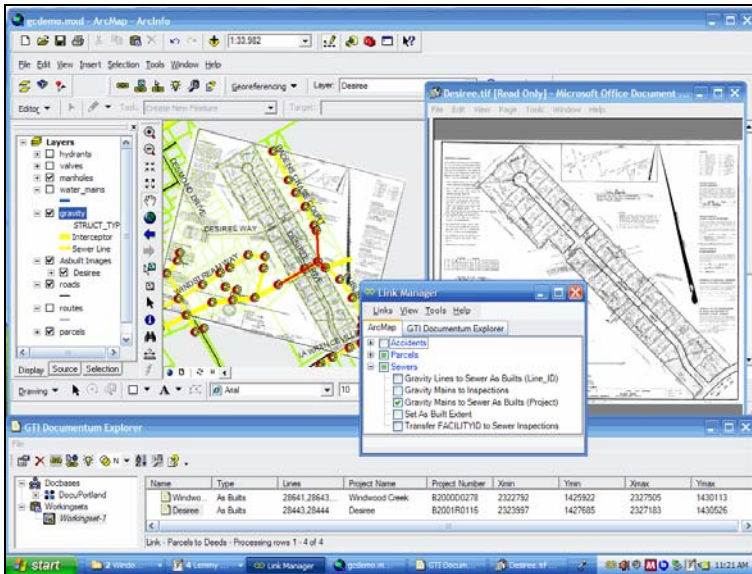
EMC Documentum enterprise content management software (ECM) enables people to collaboratively create, manage, deliver, and archive the content that drives business operations from documents and discussions to e-mail, Web pages, records, and rich media.

PlaceLynx™ for ArcGIS® connects the EMC Documentum content repository to ESRI's geographic information system (GIS) software products, to *spatially enable documents*. PlaceLynx also interconnects tabular databases, providing users integrated access to the information they need, wherever it resides.



PlaceLynx™ enhances the reach and effectiveness of your GIS. A large percentage of the documents and files managed by utilities, energy companies, and government agencies describe something shown on a map. Because workers in these enterprises understand, use, and like maps, a map driven user interface is often the most natural integration point for information of all sorts.

MORE POWERFUL QUERIES



PlaceLynx™ brings the full power of GIS spatial processing to bear on the problem of document retrieval. Instead of browsing through folders or composing a query, a user can say, “I want these sorts of documents relevant to that thing there on the map.” He clicks on the map and the documents appear. Or he can say, “Find the geo-registered files in my current map area and display them on the GIS canvas.

Conversely, he can find documents in Documentum, and then find relevant map features and locations in the GIS.

New queries are made possible because both GIS and content management users can draw on more information. For example:

- An analyst examining a crime report can ask to see similar reports within a mile radius.
- A planner reviewing a variance application can retrieve other variances for surrounding parcels.
- A traffic analyst can find the most dangerous intersections by mapping accident reports.
- A pipeline maintenance coordinator can map valves needing inspection from inspection records.

BETTER DATA MANAGEMENT

Sometimes data is copied from one system to another to ease access to information for a particular user community. For example, information depicted in CAD drawings might be duplicated as GIS map features or scanned as-built drawings might be copied into the GIS so that they can be graphically registered with GIS data layers. PlaceLynx™ connects systems so users can access the information they need directly in the system where it is most appropriately managed.

KEY FEATURES

- PlaceLynx™ is based on a flexible strategy for linking the schemas of the GIS, content repositories, and databases. Documents and map features may be associated through a variety of different methods. Links can be based on key-foreign key relationships, addresses, route measurements, and coordinates stored with documents. Links can also search full-text indexed documents.
- Map features can be created from documents; property values can be moved from one system to another.
- Geo-referenced images and related files (world files, etc.) can be stored in Documentum.
- Link definitions are tolerant of differences in data formats between systems.
- The integration is bi-directional and implemented for both web and desktop.
- Databases such as those included in case management or work management systems can be interconnected with the GIS and/or Documentum.

The screenshot shows the ArcMap interface with several windows open. The main map window displays a GIS map with various layers. A 'Link Manager' window is open, showing a list of links. A 'Valve Inspection 1.tif' window is open, displaying a table of valve inspection data. The table includes columns for System, Line, Valve Number, Date, and various inspection and action items. A QR code is visible at the bottom of the table window.

System	Line	Valve Number	Date	Inspections			Actions			Initials	Notes
				Security	Body	Leakage	Operation	Lubricated	Stem Travel		
Hanley-Bishop	17	29746	12-1-04	✓	✓	✓	✓	✓	✓	HL	
Hanley-Bishop	17	29747	12-1-04	✓	✓	✓	✓	✓	✓	HL	
Hanley-Bishop	17	29748	12-1-04	✓	✓	✓	✓	✓	✓	HL	Wagoner, B. 05/24/05
Hanley-Bishop	17	29749	12-1-04	✓	✓	✓	✓	✓	✓	HL	
Hanley-Bishop	17	29750	12-1-04	✓	✓	✓	✓	✓	✓	HL	
Hanley-Bishop	23	9481	12-5-04	✓	✓	✓	✓	✓	✓	HL	
Hanley-Bishop	23	9480	12-5-04	✓	✓	✓	✓	✓	✓	HL	
Hanley-Bishop	23	9479	12-5-04	✓	✓	✓	✓	✓	✓	HL	
Hanley-Bishop	23	9478	12-5-04	✓	✓	✓	✓	✓	✓	HL	
Hanley-Bishop	21	12004	12-6-04	✓	✓	✓	✓	✓	✓	HL	